



# Advancing High Impact Exploration Opportunities in Stable World-Class Geological Settings

---

CORPORATE PRESENTATION  
January, 2023

# CAUTIONARY NOTES

## FORWARD-LOOKING STATEMENTS

This presentation includes certain "*forward-looking statements*" under applicable Canadian securities legislation. All statements other than statements of historical facts included in this presentation, including, without limitation, statements regarding potential exploration results, future plans and objectives of the Company are forward-looking statements that involve various risks and uncertainties. There can be no assurance that such statements will prove to be accurate and actual results and future results, events and objectives could differ materially from those anticipated in such statements. Important factors that could cause actual results to differ materially from Tarku's expectations include exploration and other risks detailed from time to time in the filings made by the Company with securities regulators.

Tarku cautions that the mineralization within adjacent projects may not be indicative of the mineralization that may be identified on Tarku's Project.

## QUALIFIED PERSON

The scientific and/or technical information presented in this presentation has been reviewed and approved by Mr. Julien Davy, P.Geo., M.Sc., MBA, President and CEO for Tarku Resources.

Mr. Davy is a Qualified Person (QP) as defined by National Instrument 43-101.

## CURRENCY

All dollar amounts are reported in Canadian dollars (CAD) unless otherwise indicated.

## CONTENT

04

CORPORATE OVERVIEW

12

SILVER STRIKE PROJECT - TOMBSTONE, AZ (USA)

24

3A's PROJECTS - ADMIRAL, ATLAS, APOLLO – MATAGAMI (CANADA)

28

THE CATALYSTS

29

CONTACT INFORMATION

# CORPORATE OVERVIEW

**TARKU**  
RESOURCES



*“Exploration is about  
**risks** management”*

## ABOUT TARKU:



Listed on **3** Exchanges

TSX.V: TKU + FSE: 7TK + OTCQB: TRKUF

### Junior Exploration Model

Right Project at the Right Place. In the last decade, **63% of all discoveries** in the Western World were made by junior explorers



### Leading Value Creation Strategy

- Stable Jurisdictions & Established Infrastructures
- to overlooked district size opportunities in historical mining camps = **Project Recycling**
- Geological coherence



### Experienced Management Team

Tarku's management team has over 100 years of combined experience in mining exploration and finance





*“Exploration is about  
risks management”*



## ABOUT TARKU:

### Commitment to Sustainable Development

Tarku acknowledges that the success of an exploration project is a balance between technical quality and social acceptability in the host environment and the surround communities. Tarku's policy is based on transparency and collaborative process.



### Modern exploration techniques

to overlooked district size opportunities in historical mining camps



### World Class Mining Projects

Tarku is currently advancing several projects of high geologic merit in AZ and QC.





## Bernard Lapointe, P.geo.,

Ph.D. Chairman of the Board



Bernard has 35 years of experience in exploration and project development. He founded Arianne Resources in 1997 and headed the company until 2013 that became Arianne Phosphate.

He contributed to the discovery and development of the Lac à Paul project located in Quebec, one of the largest phosphate projects in the world.

## Julien Davy, P.geo., M.Sc., MBA

President, CEO & Director



Julien has more than 25 years of experience in mining exploration in North & South America with projects spanning from exploration to advanced-stage.

In 2015, Julien co-founded Eureka Exploration, a private exploration company, which has been sold to Tarku Resources in June 2017.

He is a member of the OGQ and Qualified Person (QP) according to National Instrument 43-101.

## EXPERIENCED LEADERSHIP



### Kyle Appleby, CPA CA

CFO & Director

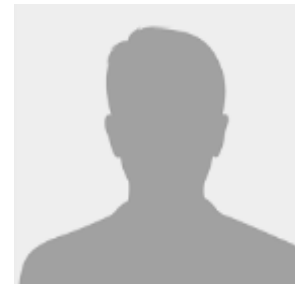
Kyle has substantial experience as the CFO of various public companies and possesses an in-depth understanding of the junior natural resource markets.



### David G. Watkinson, B.Sc., P.Eng.

Director

Mr. Watkinson has over 35 years of professional engineering experience and has acted as an Officer & Director of various public mining companies.



### Jeff Sheppard, CPA, CA

Director

Mr. Sheppard is a graduate of the University of Saskatchewan (BComm) and is a Chartered Professional Accountant (CPA, CA).

SUMMARY		
Issued & Outstanding		100.1 M
Options		5.8 M
Warrants		30.3 M
FULLY DILUTED		136.1 M

OPTIONS		
\$0.10	Exp. Mar. 13, 2024	376,922
\$0.11	Exp. Jul. 30, 2025	810,000
\$0.17	Exp. Nov. 9, 2025	3,200,000
\$0.10	Exp. Feb. 16, 2027	1,500,000

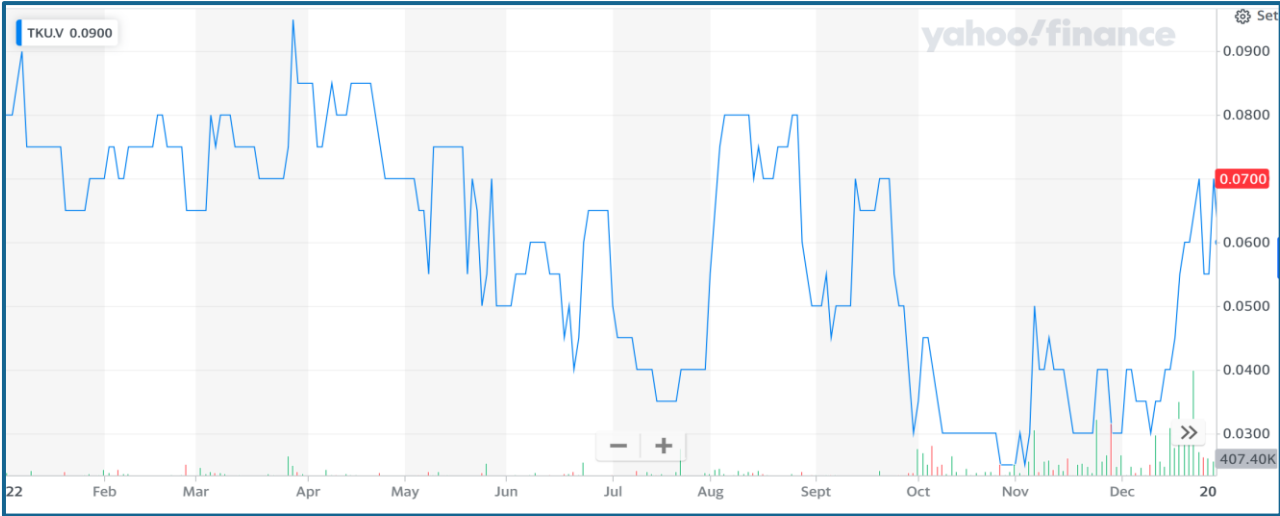
  

WARRANTS		
\$0.15	Exp. Dec.3, 2023	385,000
\$0.15	Exp. Apr.15, 2024	3, 192,275
\$0.15	Exp. May 1, 2024	12,500,000
\$0.15	Exp Sep.09, 2024	434,000
\$0.08	Exp. Dec. 21, 2025	13,750,000
Potential proceeds from the exercise of warrants		\$3.6 M

\* As of January 3rd, 2024

# CORPORATE OVERVIEW

## STOCK CHART



## MARKET CAPITALIZATION

~ 6 - 10 M\$

## 52 WEEK HI-LOW

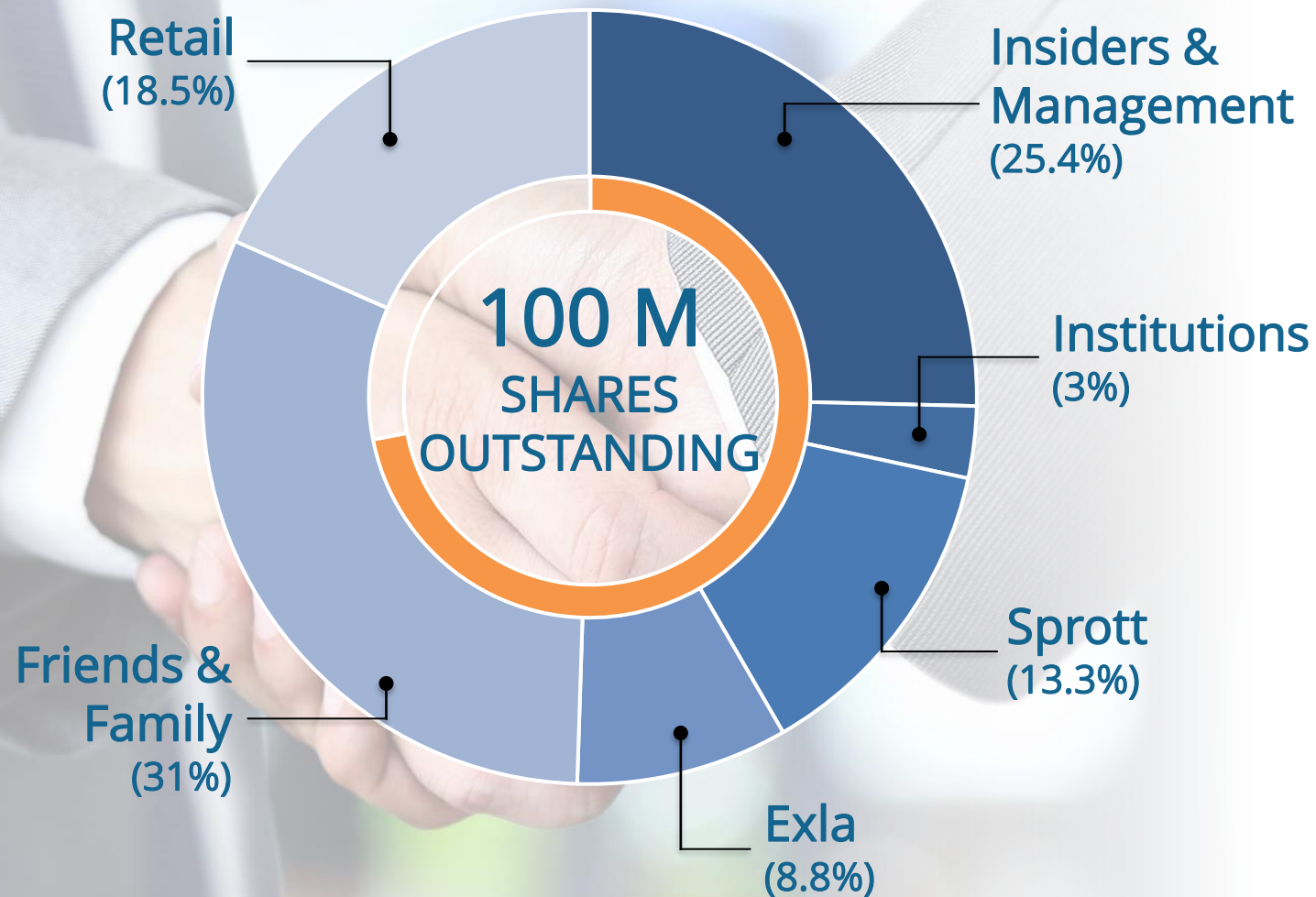
\$0.02 - \$ 0.12

## STOCK TICKERS





# MAJOR SHAREHOLDERS



**Sprott**



**GOLDSPOT**  
DISCOVERIES CORP.



## TIGHTLY HELD STRUCTURE

**70%** of all shares  
are held by  
**25** Shareholders

# WORLD-CLASS & DISTRICT-SCALE PROJECTS

Tarku Resources is currently engaged in advancing several projects with exciting exploration potential located within mining-friendly jurisdictions at various stages of development



Great geology with great Blue-sky potential



Great access to infrastructure in world-class districts

## ARIZONA

### PROVEN MINING JURISDICTION

The Silver Strike project exhibits several similarities to nearby world-class mines.

Ag

Au

Cu

Pb

Zn

### TOMBSTONE, AZ (USA) SILVER STRIKE PROJECT

In the world-class, Tombstone Mining District. Tarku's recent exploration produced drill results of up to **1,515 g/t of silver equivalent**

## QUÉBEC

### FISCAL INCENTIVES

- For Explorers: 35% of yearly Tax Credit
- For Investors: Flow-Through Shares, (Quebec 38% after-tax cost)

### MATAGAMI, QC (CANADA)

#### THE 3 A'S PROJECTS

Cu

Zn

Ag

This region has been the host of several successful mining operations. Tarku is advancing 3 promising projects within this region.

Au

### LA CORNE, QC (CANADA) MAX LITHIUM PROJECT

Li

located in same batholith and geology as and just 4 km southwest of the **North American Lithium mine**, the only operating lithium mine in Quebec.





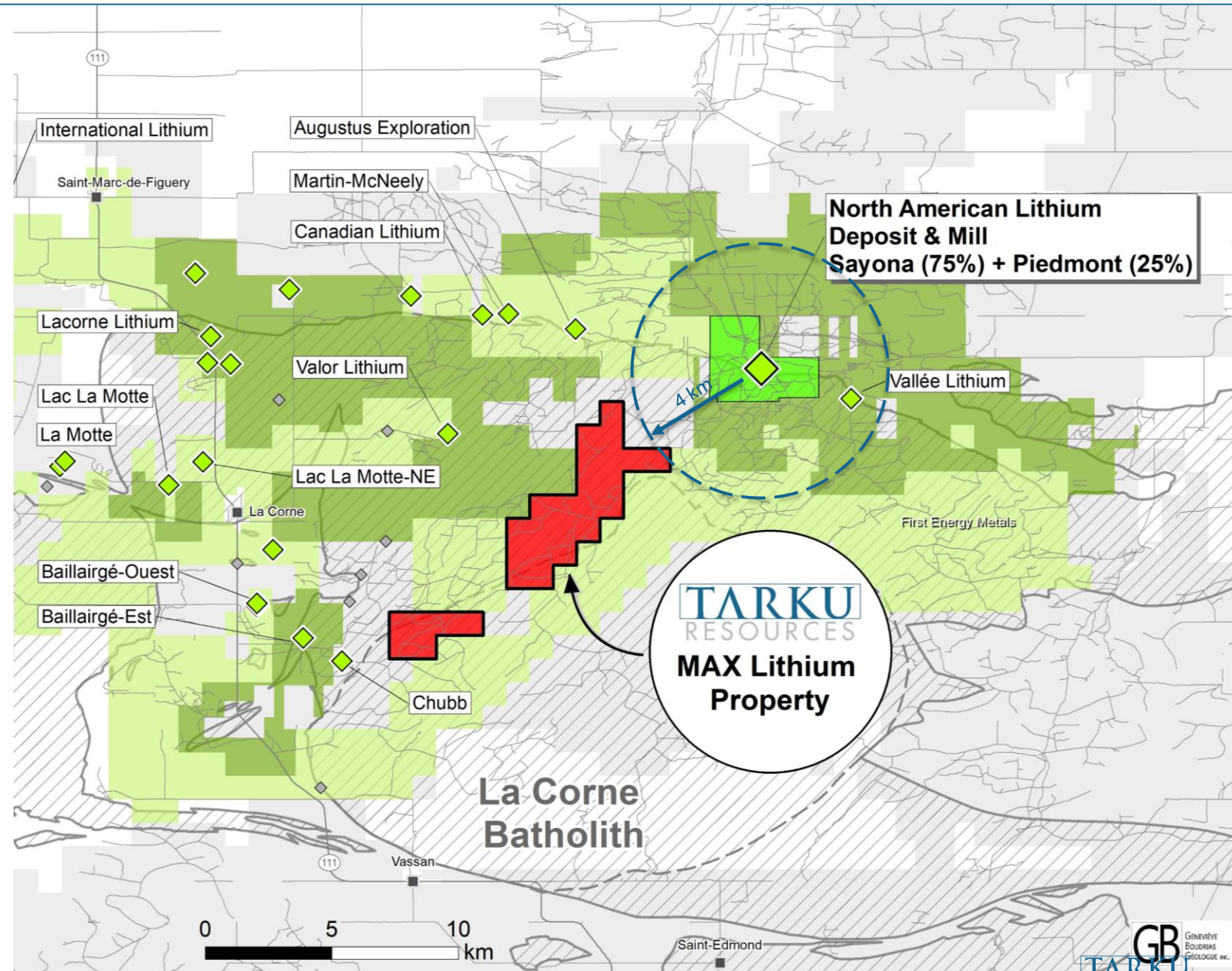
# MAX LITHIUM PROJECT

## LA CORNE, ABITIBI, QC (CANADA)




# MAX LITHIUM, QC – STRATEGICALLY LOCATED

- RECENT ACQUISITION = 100% TKU
- Abitibi Region, Quebec
- MAX Lithium property located in same batholith and geology as and just 4 km southwest of the **North American Lithium mine**, the only operating lithium mine in Quebec
- 19 km<sup>2</sup> property with road access, surrounded by spodumene-rich pegmatite showings and hosting several outcrops with as-yet untested potential
- Exploration program to commence soon, and will include detailed mapping and sampling to prepare next drill targets







# SILVER STRIKE PROJECT

## TOMBSTONE, AZ (USA)

**TARKU**  
RESOURCES



# TOMBSTONE – HISTORIC MINING DISTRICT



The historic and famous O.K. Corral has been preserved but is now surrounded by walls sits on today's main Allen Street



# TOMBSTONE – HISTORIC MINING DISTRICT

Tombstone Silver District was discovered in 1877. Since 1985, no modern exploration programs prior to Tarku's acquisition



“ *The best place to discover a mine...  
is in the shadow of a  
head frame* ”



## HISTORIC PRODUCTION

1877-1936  
&  
1980-1985

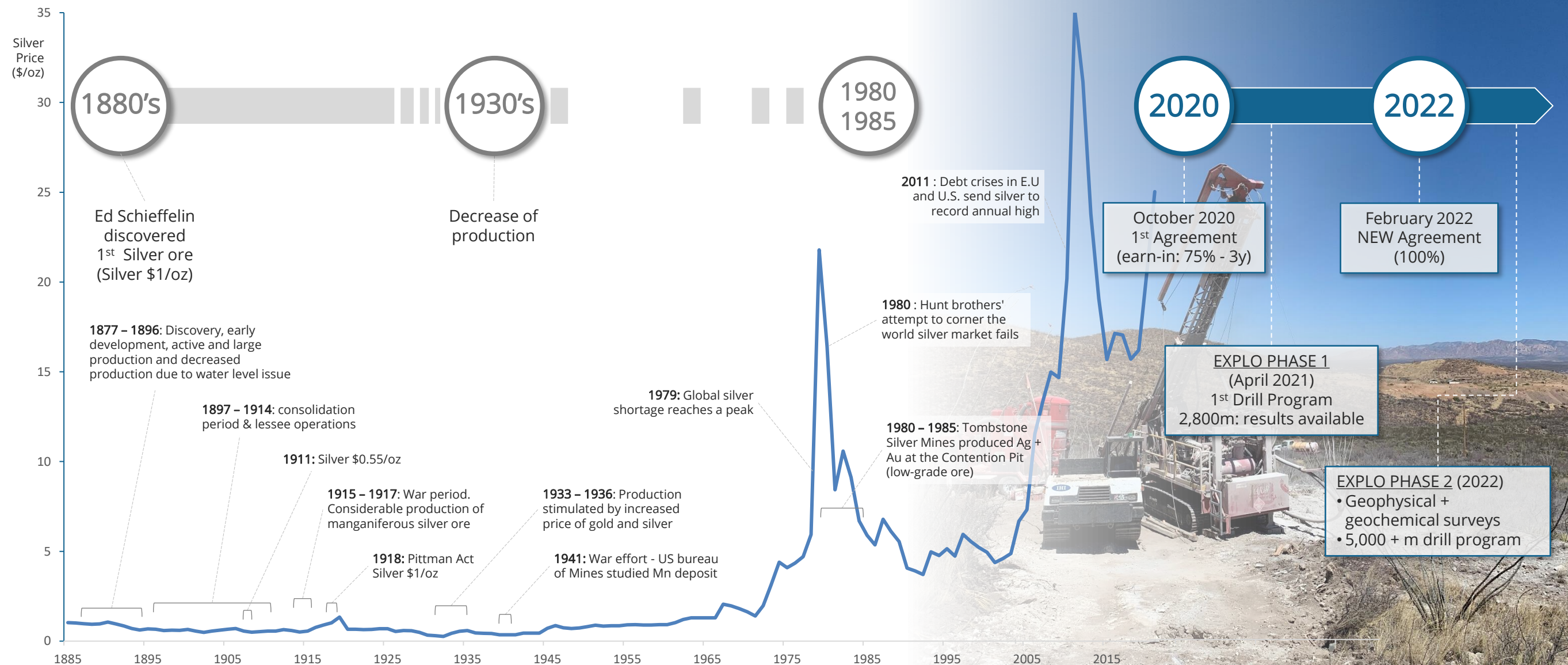


HISTORIC  
AVERAGE  
GRADE





# SILVER STRIKE, AZ – EXPANDING THE TOMBSTONE LEGACY

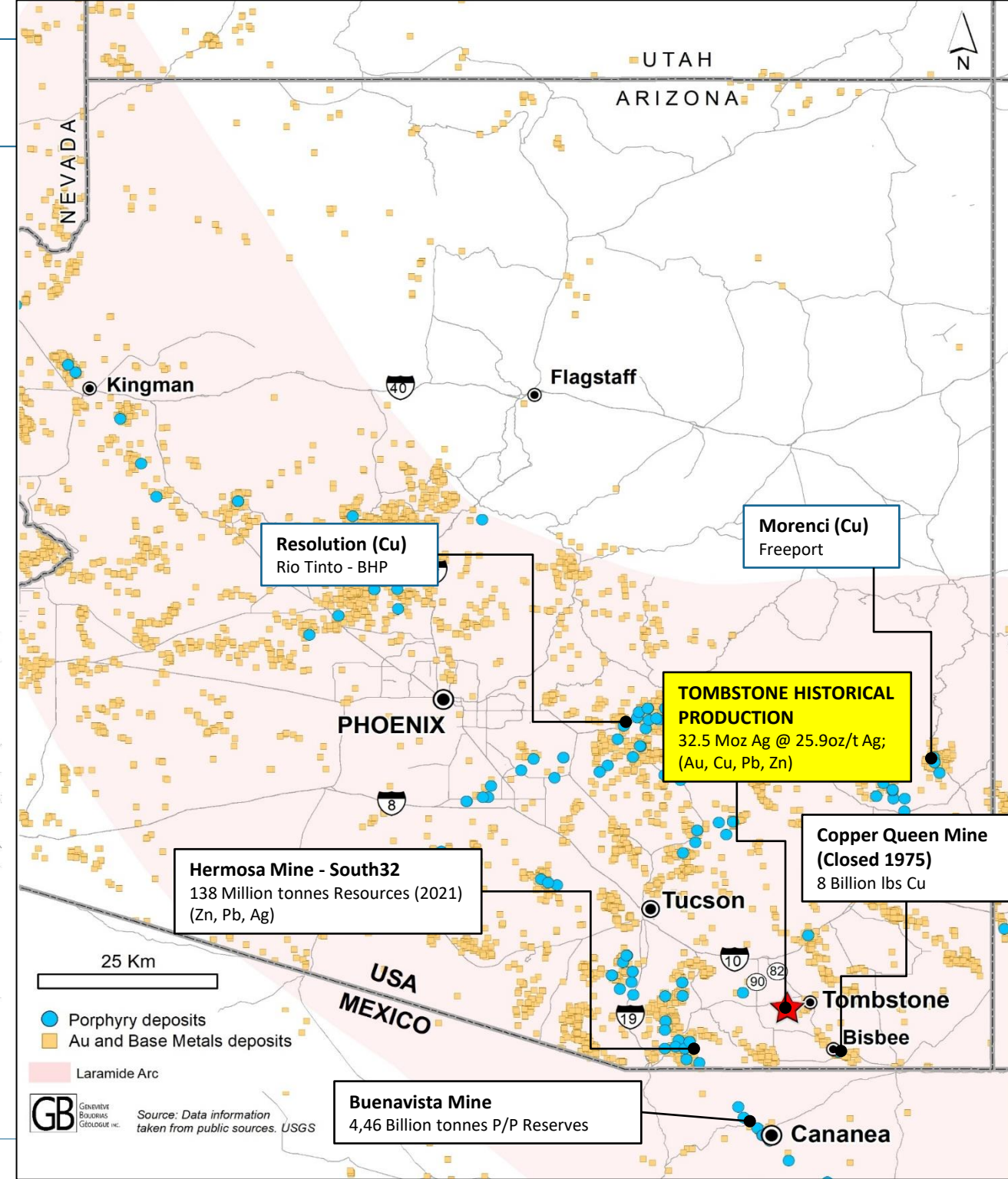
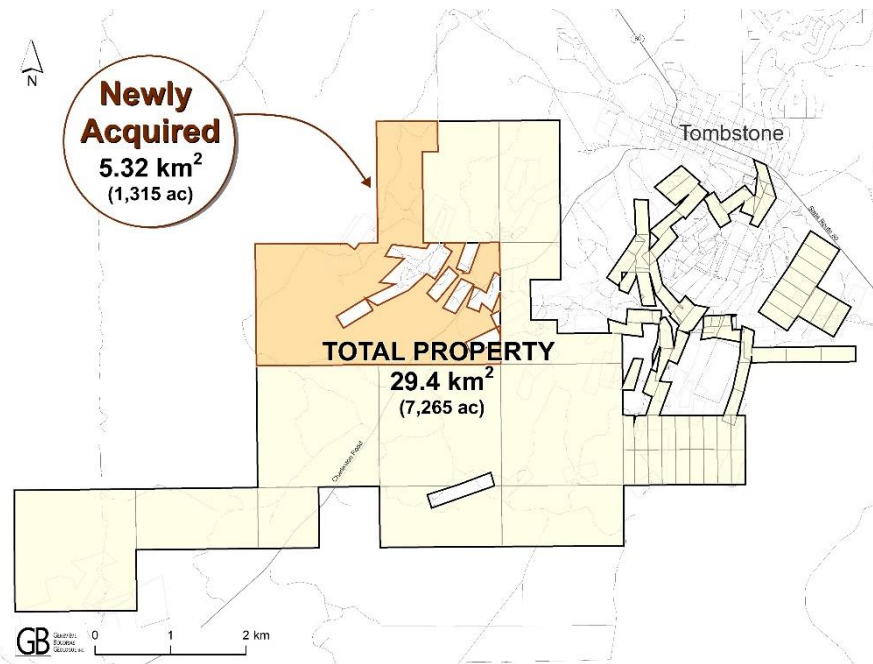


Source: Different web sources as [www.gainesvillecoins.com](http://www.gainesvillecoins.com)

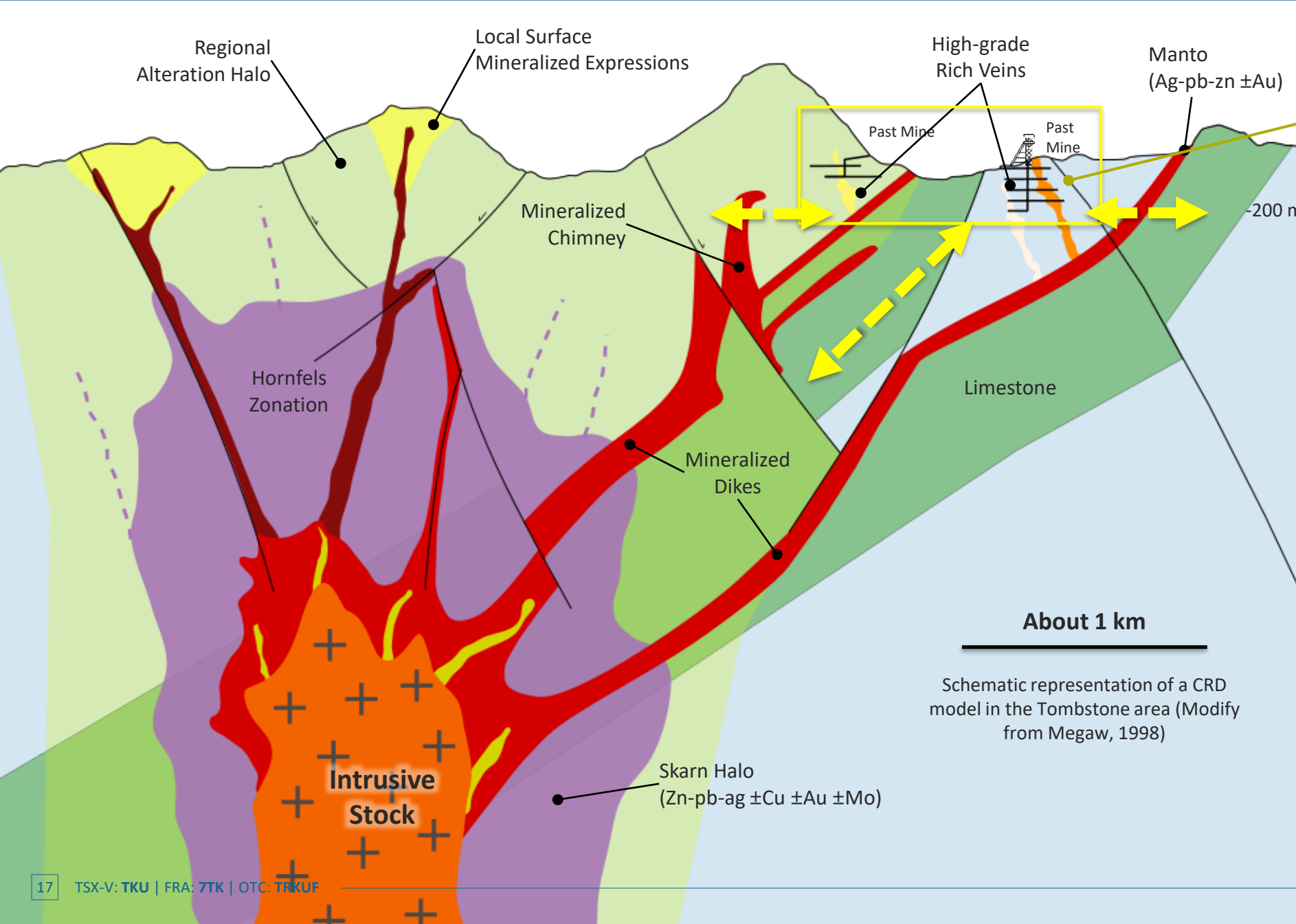


# SILVER STRIKE, AZ – GENERAL GEOLOGY

- **ELEPHANT COUNTRY** for porphyry deposits: Arizona are among the great mineral endowments of the world
- Intrusions in the Tombstone area range from 74 Ma to 63 Ma in age, **which is host to several porphyry mines**
- Area characterized by mountain building episodes and sedimentation (mountain erosion) intruded by numerous granites.
- These districts are typically zoned from silver-rich peripheries to higher base-metal and gold contents near to the intrusions. Copper-gold mineralization occurs in intrusion-hosted stockworks, skans, or mantos
- Locally most of the sediments are related to the **Bisbee Formation**



# SILVER STRIKE, AZ – THE POTENTIAL



Surface  
 200 m  
 -200 m

+ 95% of historical production

**TARKU'S POTENTIAL**

AT DEPTH + EXTENSIONS  
 = BIG PICTURE

## THE CRD MODEL

- Carbonate Replacement Deposit (CRD)
- Similarities with the **Hermosa Project** (Taylor Deposit), located 80km west which South32 acquired for USD 1.8 billion in 2018:
  - comparable age and sediment types
  - classified as a CRD style zinc-lead-silver massive sulphide deposit.



# HERMOSA & SILVER STRIKE PROJECTS

“

*Our interpretations to date let us to strongly speculate that both areas are geologically related, opening the potential for a large Carbonate Replacement system feeding all various spikes similar to the world-class Hermosa Mine, located within a comparable geological environment 80 km from our project.*

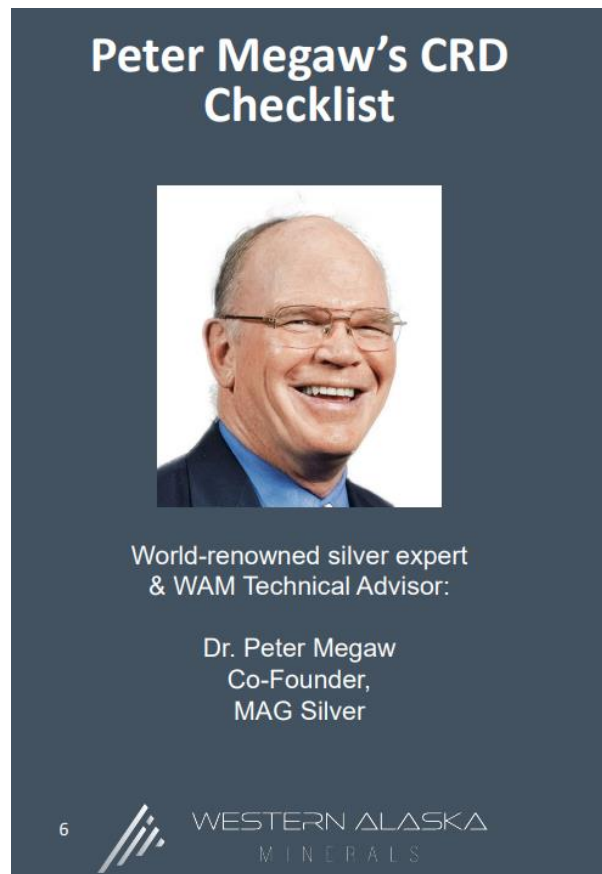
”

———— Julien Davy, CEO ————



# SILVER STRIKE, AZ - Peter Megaw's CRD Checklist\*

\*(taken from WAM's website)

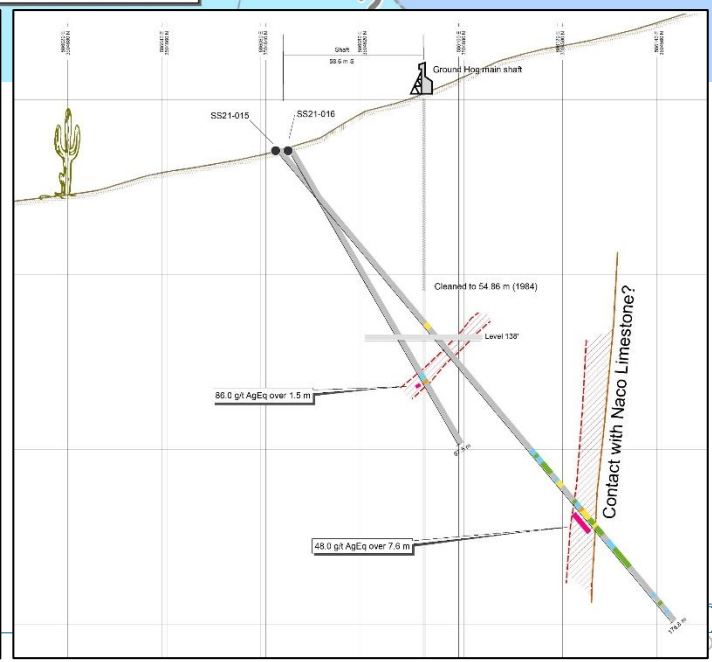
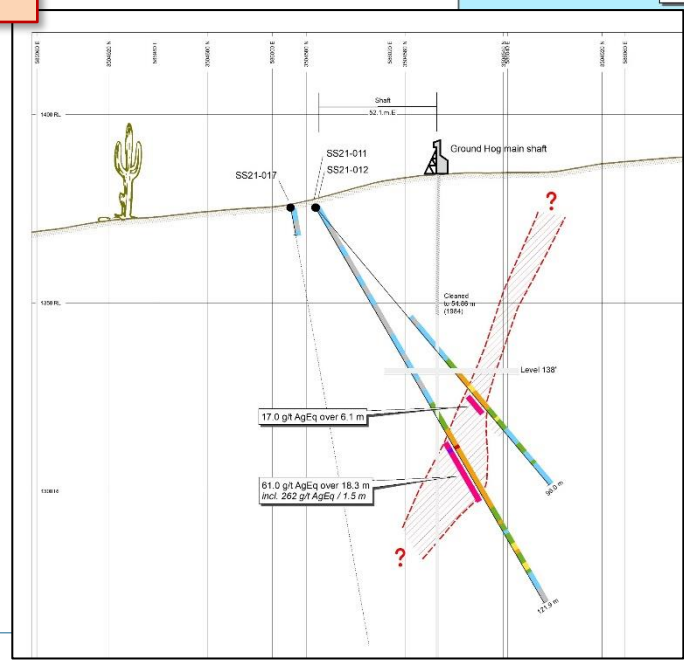
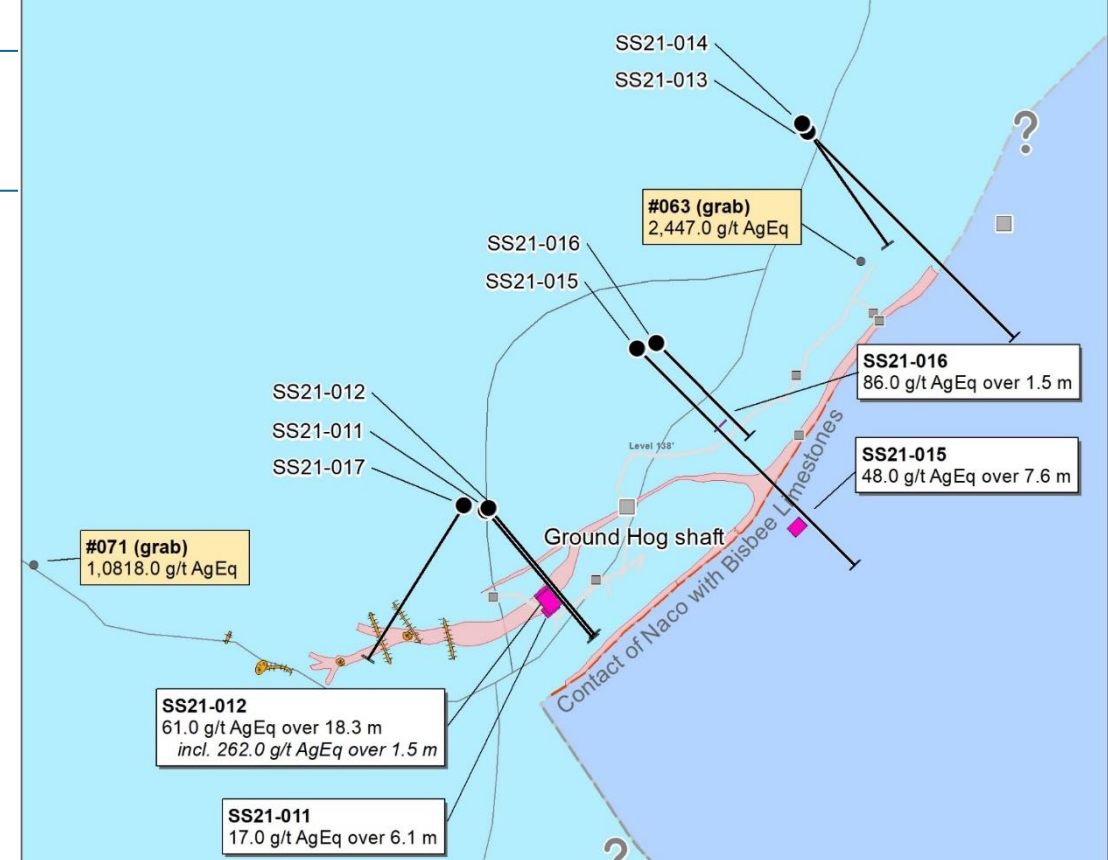
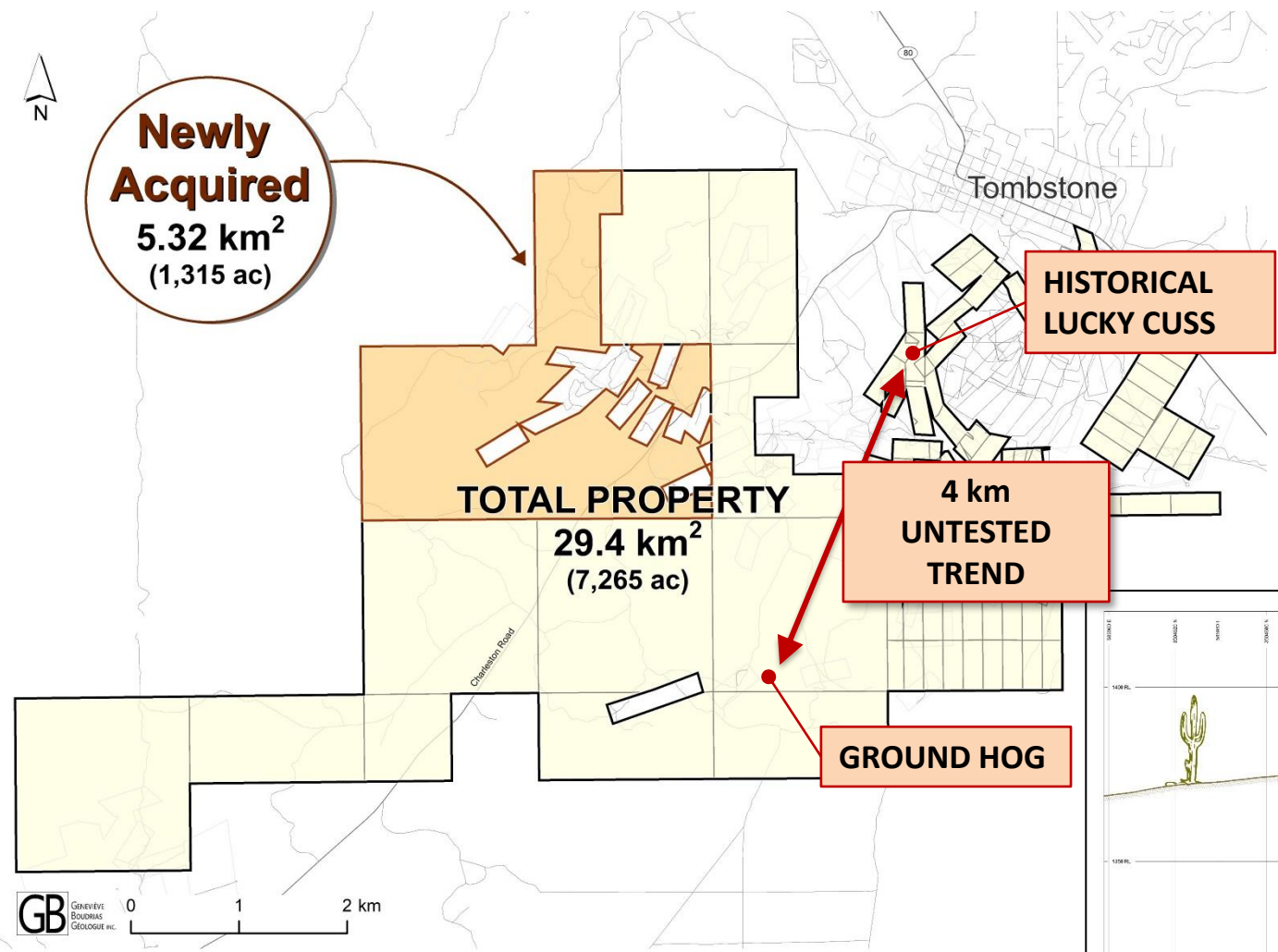


1. Location – Main Street CRD Belt
  - Intrusions in the Tombstone area range from 74 Ma to 63 Ma in age, fixing the age of the District as Laramide, which is host to several porphyry mines;
  - Other deposit in the area: Hermosa Mine;
2. Ag (+400g/t), Au, Zn, Pb, Cu + Mn, Mo, As, W, V, Cd
3. Multiple mineralization and alteration stages
  - 167 past mines reported, large variety of mineralization
4. Large-Scale zoning
  - Newell R.A., 1974 demonstrated the zonation
5. Located at top of carbonate section (room to grow)
  - Top of the Naco Limestone (Competent formation composed of uniform massive beds)
6. Presence of Felsite dikes
  - Uncle Sam quartz latite porphyry
7. Discordant geometry (not syngenetic)
  - Blue Limestone « Novaculite » UNCORFIMITY
8. Replacement mineralization (UNKNOWN YET)
9. High iron sphalerite (UNKNOWN YET)
10. Pyrite pseudomorphs after pyrrhotite (UNKNOWN YET)
11. Molybdenum mineralization
12. Granitic Stock
  - Schieffelin granodiorite

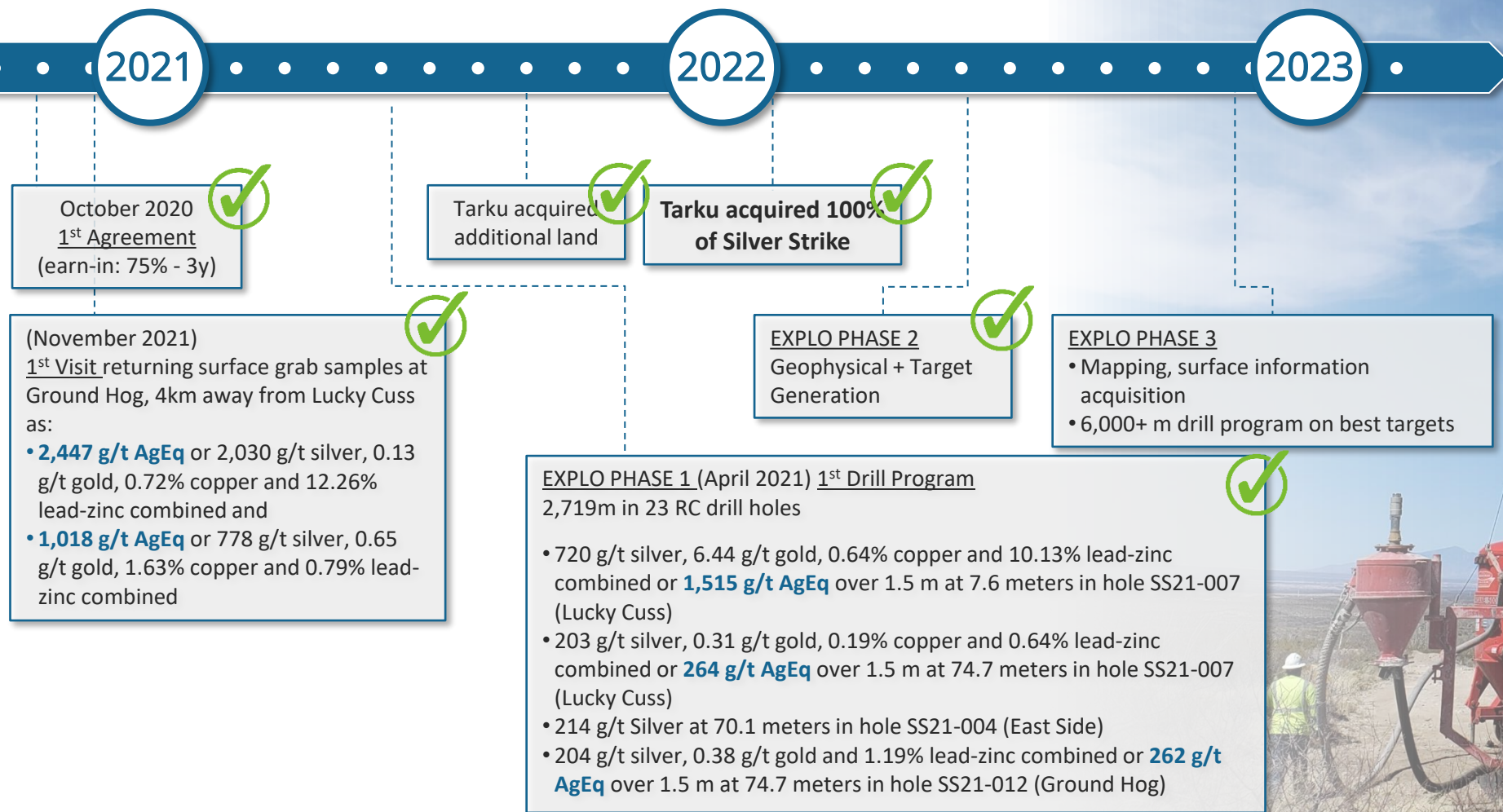




# GROUND HOG AREA - 4KM AWAY, ON TREND



# SILVER STRIKE, AZ – TARKU TO DATE



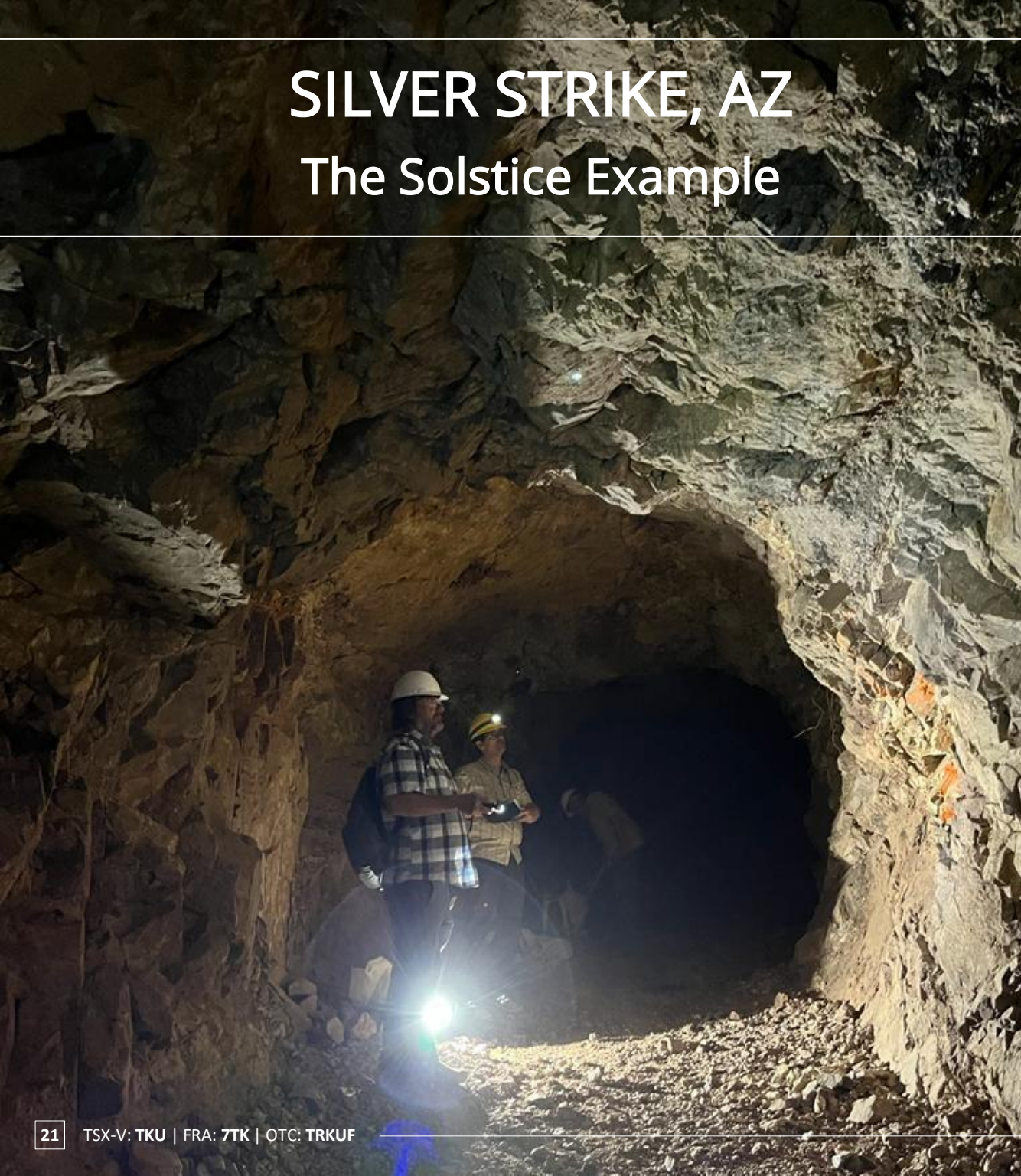
2021 drill program, revealed the presence of silver, gold, lead and zinc at high-grades suggesting further similarities to the nearby **Hermosa Project**





# SILVER STRIKE, AZ

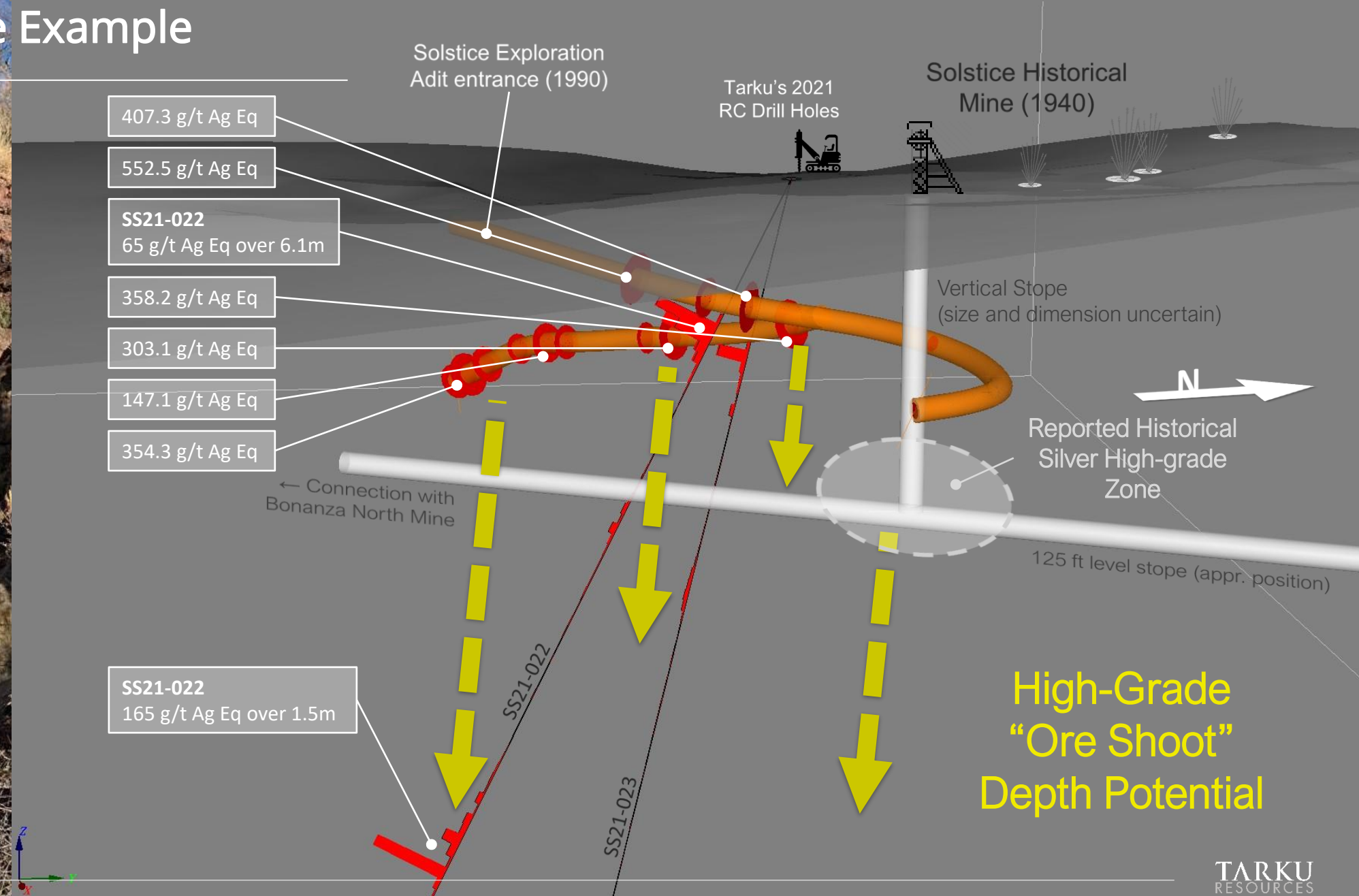
## The Solstice Example





# SILVER STRIKE, AZ

## The Solstice Example





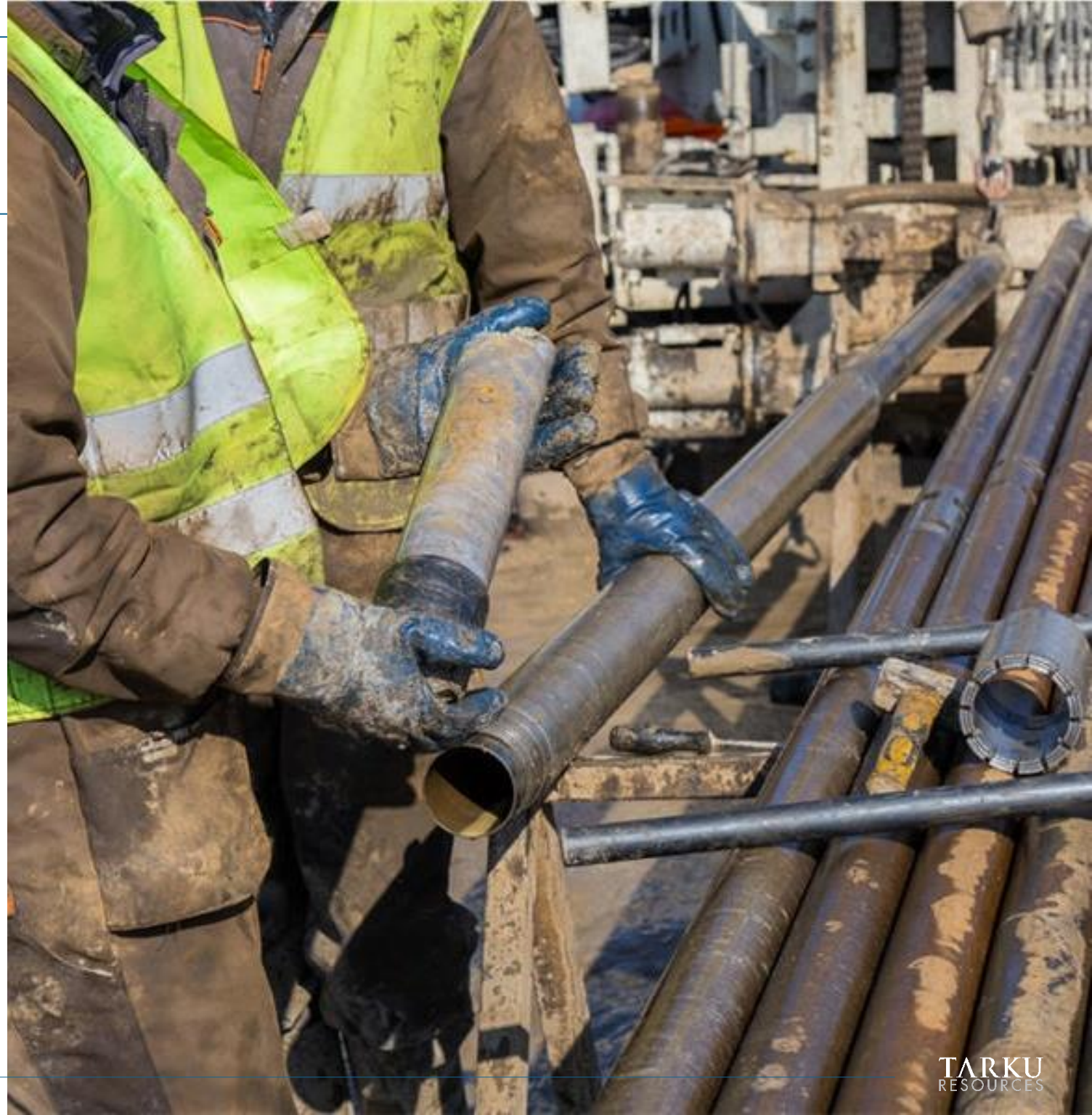
# SILVER STRIKE, AZ – EXPLORATION PIPELINE

2023

2024

## PHASE 2 (2023):

In 2023, Tarku's program will focus on project advancement, and new discoveries by conducting geophysical, geochemical and a minimum of 6,000-meter drilling focusing on surface to 400 meters depth along the Lucky Cuss and the Ground Hog Trend.



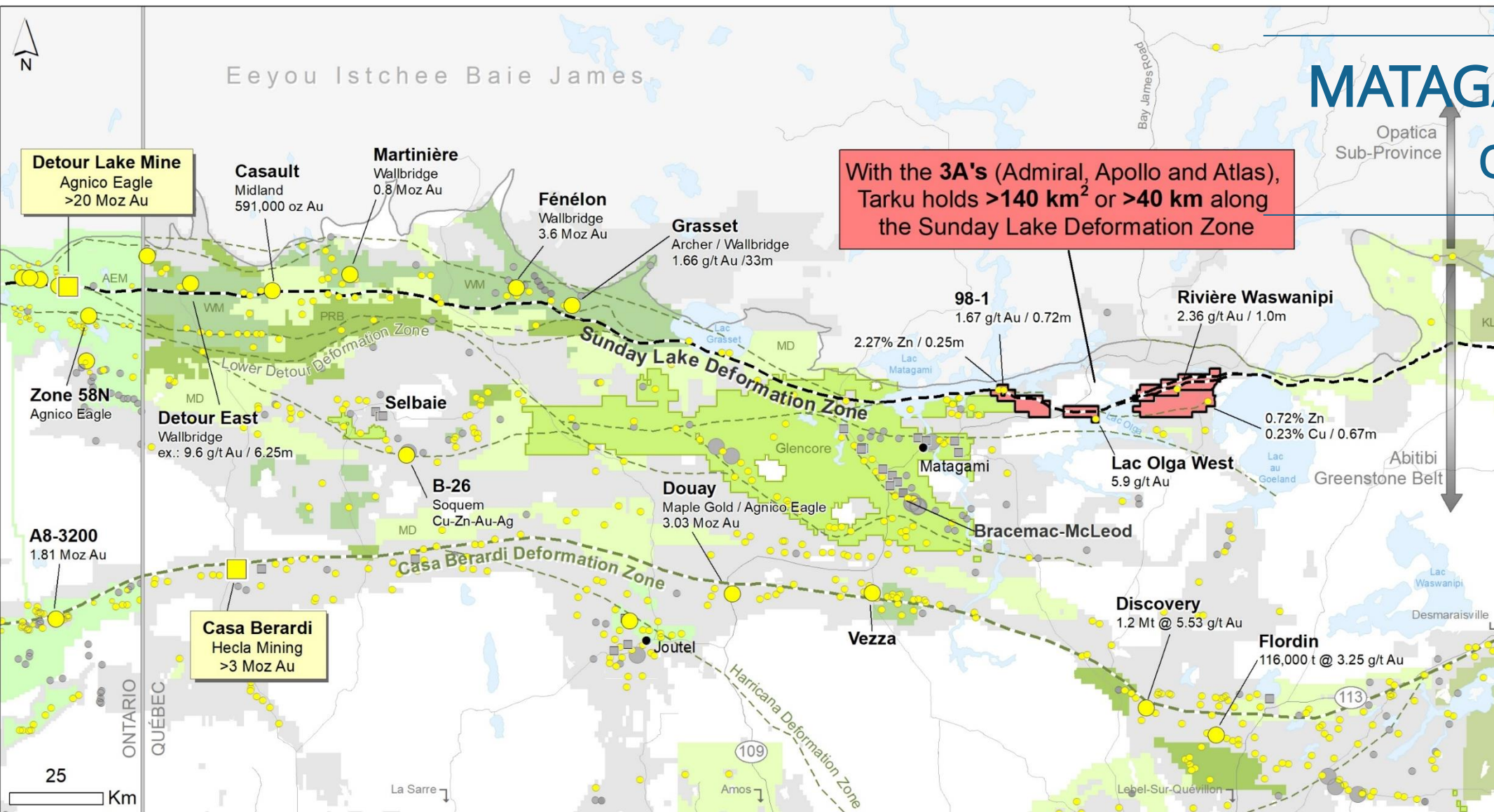


An aerial photograph of a vast, dense forest in Matagami, Quebec, Canada. A winding river or stream flows through the center of the forest, with some areas showing exposed brown earth or fallen leaves. In the lower center, a small clearing contains several vehicles, including a white truck and a smaller car. The background shows a large body of water under a clear blue sky.

# The 3 A's PROJECTS APOLLO, ATLAS and ADMIRAL MATAGAMI, QC (CANADA)

**TARKU**  
RESOURCES





# MATAGAMI, QUEBEC - OVERVIEW


ABITIBI GREENSTONE BELT on the Eastern extension of the Sunday Lake regional fault

**Total 248 mining claims (13,718 hectares)**

Gold, Lead & Zinc

6 km wide favorable zone along the regional fault zone interpreted as being similar to those of the regional Sunday Lake Fault, host of the Detour Lake mine, or the Kirkland Lake Mining Camp

Traditional Zn & Cu-Au mining districts, underestimated for gold



TSX-V: TKU | FRA: 7TK | OTCQB: TRKUF

## THE DETOUR – MATAGAMI TREND

In Abitibi, most Gold and Base Metals Deposits are known to be related to Regional Deformation Zone. The Sunday Lake Deformation Zone is an underexplored Gold and Base Metal-rich environment hosting an active Mine, proven resources and prospective Advance Projects

Source: Compilation of mining titles, Mineral Resources and Reserves made from public informations as of January 2023 for information purposes only

■

 Operating Gold Mine

■

 Past producing Mine

●

 Deposit

●

 Showing

—

 Regional Deformation Zones (Fault)

- - -

 Minor Regional Deformation Zones (Fault)

Au Cu, Zn, Pb, Ni, Ag

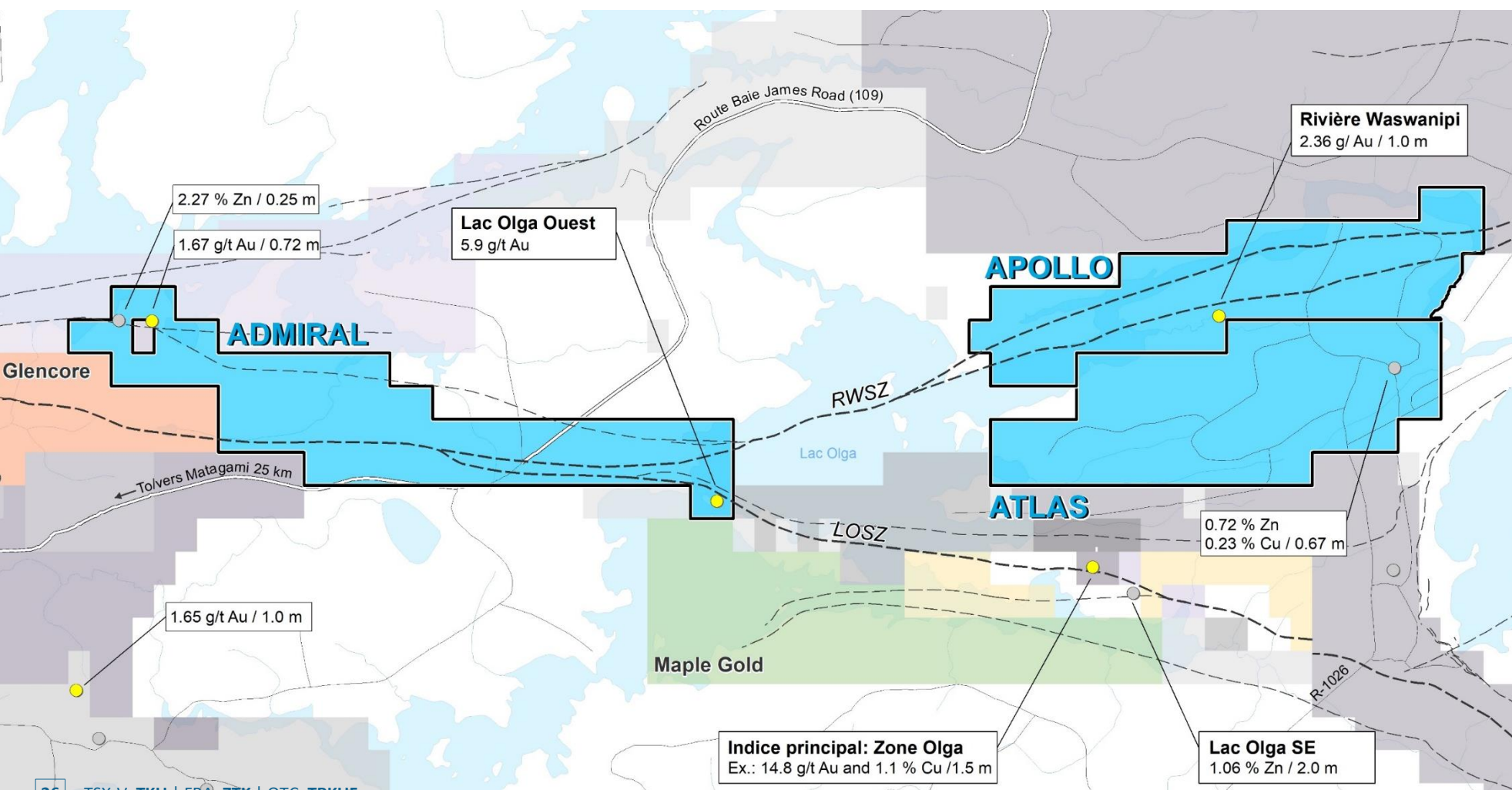
AEM : Agnico Eagle  
WM : Wallbridge Mining  
MD : Midland Exploration  
PRB : Probe Metals  
KLD : Kenorland Minerals

GB GENEVIEVE BOUDRIAS GÉOLOGUE INC.



# THE 3As, QUEBEC - PROJECT GEOLOGY

“ *Gold mineralization which Tarku interprets as being similar in nature to those of the regional Sunday Lake Fault, host of the Detour Lake mine or the Kirkland Lake Mining Camp* ”



## 1. APOLLO (Au):

- Context interpreted as similar to the Detour Lake Gold Mine (>15 Moz Au)
- Regional gold-bearing shear zones.
- High MAG zones along shear zone never drill tested
- Shearing associated with:
  - Alkaline rocks,
  - Polygenic Timiskaming type conglomerates
  - Gold anomalous porphyritic intrusions

## 2. ATLAS (Au-Cu-Zn):

- Volcanic-sedimentary rocks regional contacts favorable for Gold-VMS deposits (Bousquet Type)
- Few drill holes

## 3. ADMIRAL (Au):

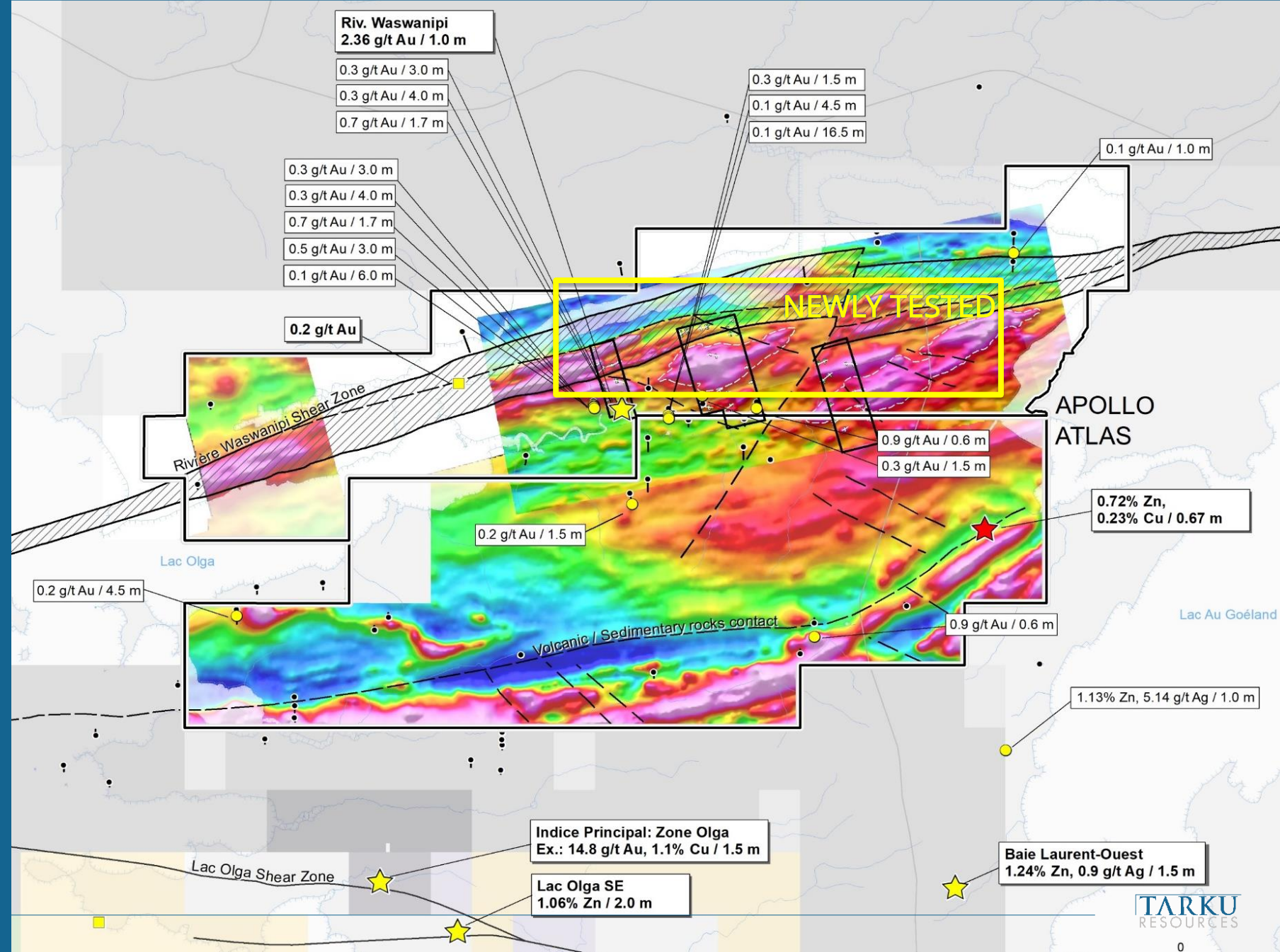
- Junction of 2 regional shear zones with showing returning 5.9 g/t Au
- Contact between mafic volcanic rocks and sedimentary rocks



# THE 3As, QUEBEC – EXPLORATION PIPELINE

## 2016 to 2021 Tarku's exploration:

- Well-defined geological environments promoting the formation of 2 different deposit models:
  - Orogenic Gold on Apollo and
  - Gold-rich VMS on Atlas
- Magnetic data shows historical gold values associated with porphyritic and alkaline rocks in historical drill holes are mostly located at the edge of magnetic highs and none of the drill holes directly intersected high magnetic anomalies
- Survey identifies crosscutting NE-SW structures where the magnetic pattern abruptly disappears or is displaced within the Rivière Waswanipi shear zone, but also along the
- A new interpretation of the survey data has generated many high-priority drill targets focusing on structural intersections, interpreted intrusions, and historic untested geophysical anomalies.

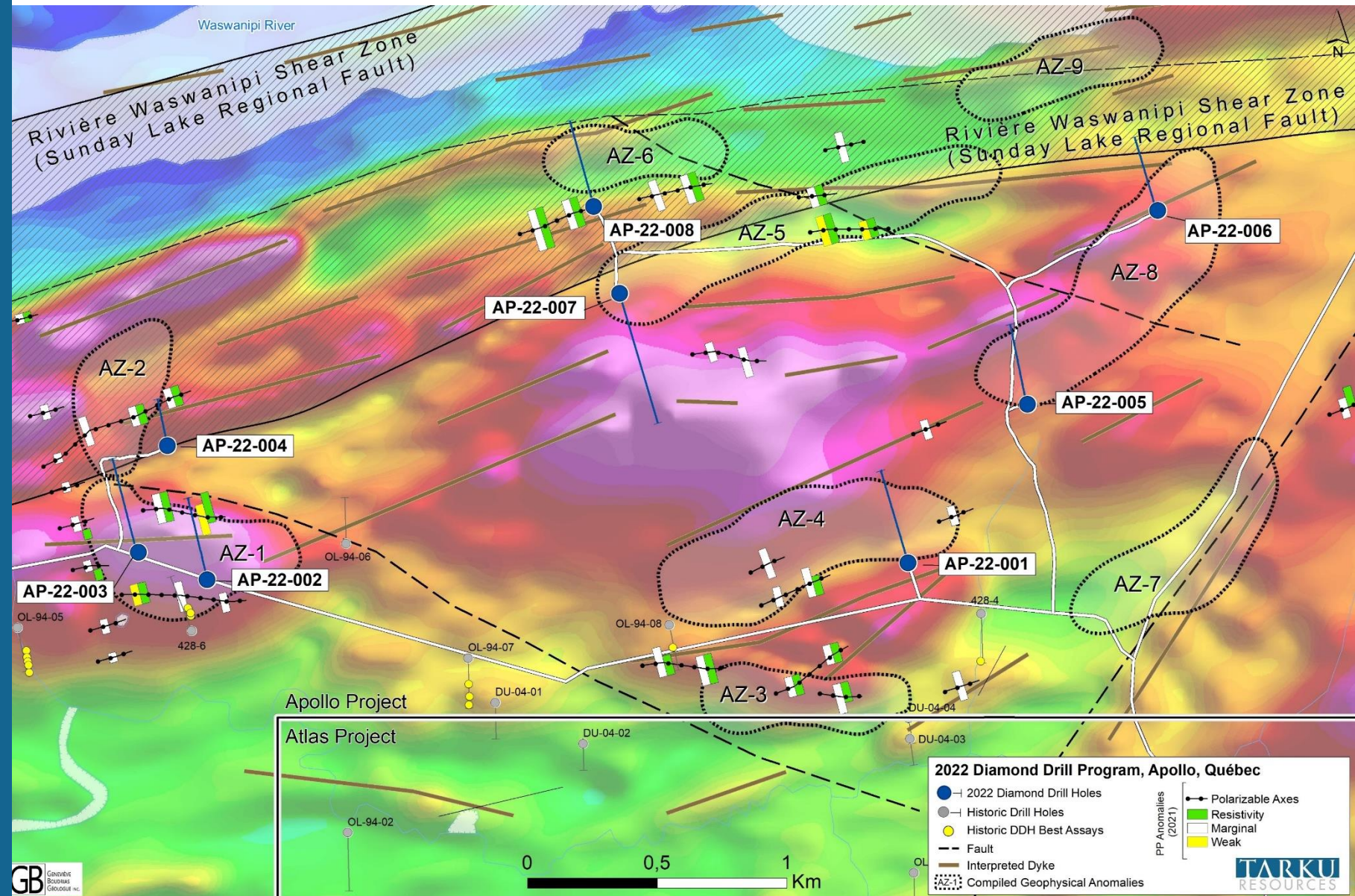
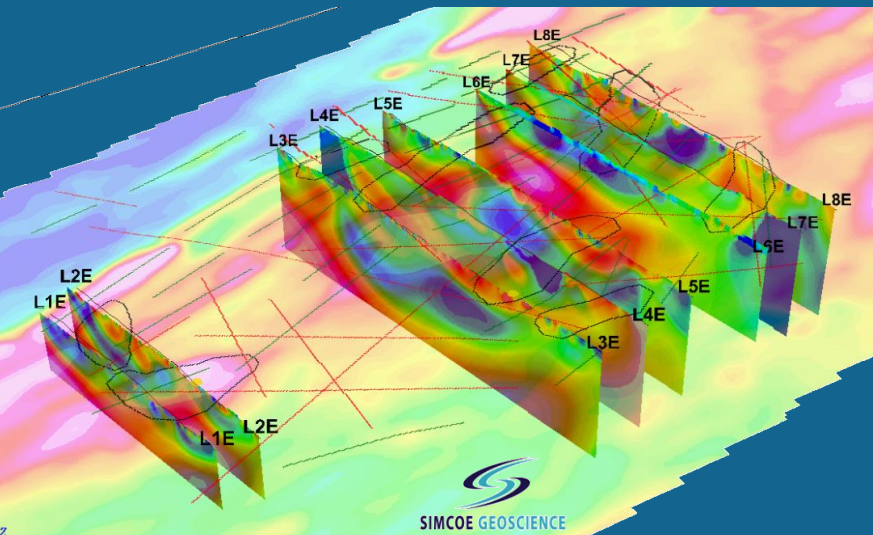




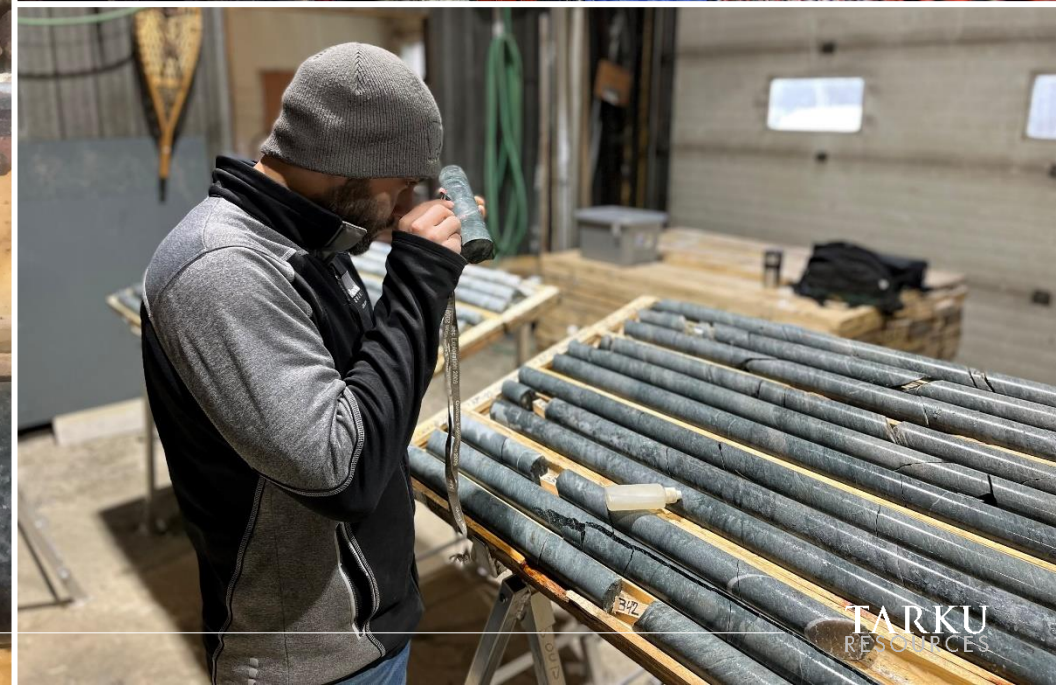
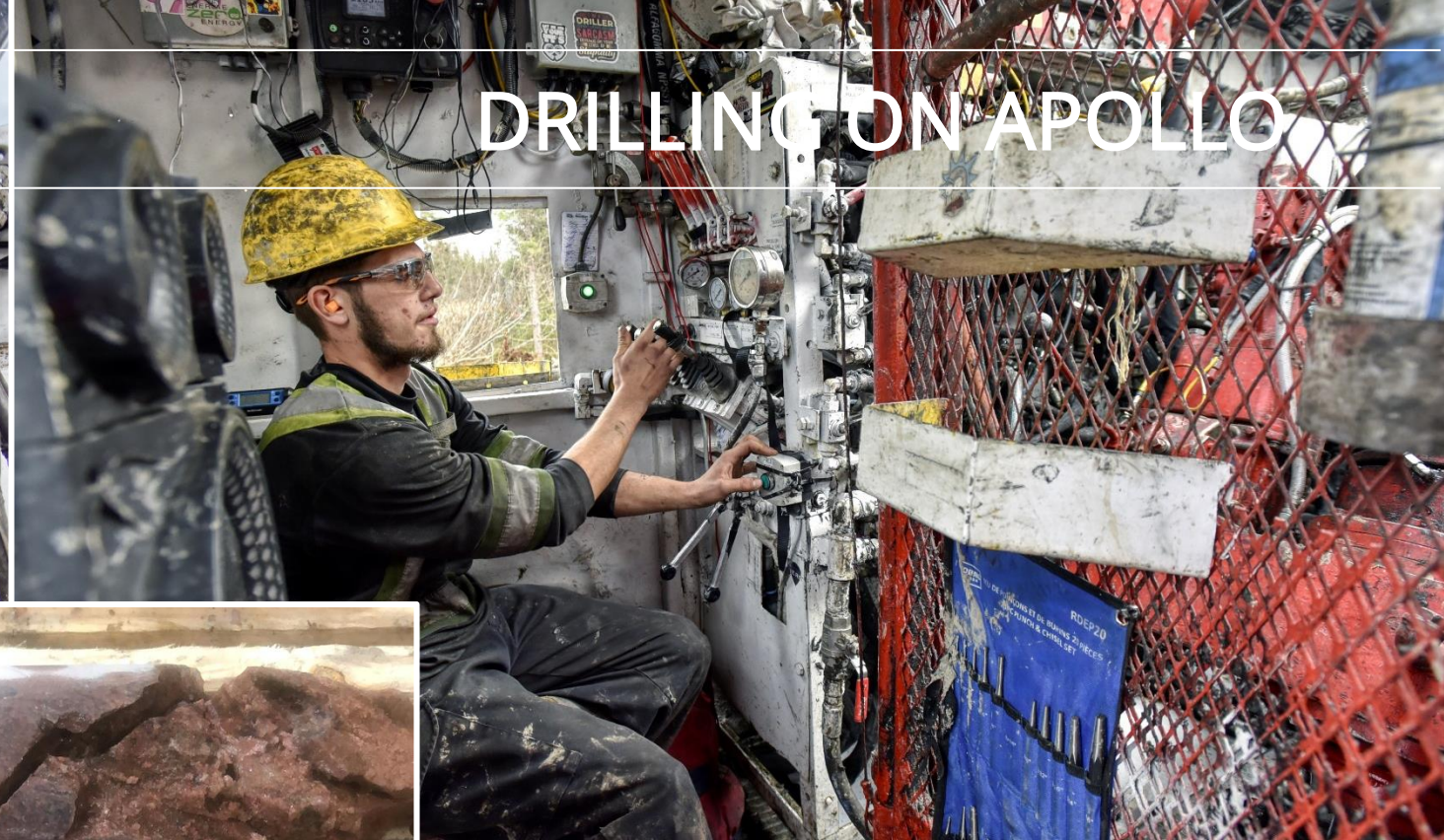
# APOLLO, QUEBEC – WINTER 2022 DRILL PROGRAM

2022 – 3,048m drilled, Assay Results Pending:

- ~ 6 km long on Apollo of prioritized Gold Targets along a regional fault with “intrusion shape” high MAG anomalies Never Drill Tested
- 9 zones of anomalies with 13 targeted holes within that regional fault







# DRILLING ON APOLLO



# THE CATALYSTS

Tarku Resources is committed to building shareholder value by executing future drill programs in Arizona and Quebec.

## QC - MAX Li

Sampling &  
Trenching

Positive Results =  
1st Drill Program

Positive Results =  
More Drilling

## QC - 3As

Results =  
NEW TARGETS

2<sup>nd</sup>  
Drill Program

43-101 Update

More Drilling

## AZ - SILVER STRIKE

NEW TARGETS from  
Geophysics = MAPPING

Field Exploration  
Sampling & Trenching

2<sup>nd</sup>  
Drill Program

43-101 &  
1st Resource Estimate



# CONTACT US



[www.tarkuresources.com](http://www.tarkuresources.com)



+1 (514) 618-7287



[investors@tarkuresources.com](mailto:investors@tarkuresources.com)



Suite 1730 - 800, boul René-Lévesque W,  
Montréal, Quebec H3B 1X9 Canada

@TarkuResources



# MERCI !

**TARKU**  
RESOURCES